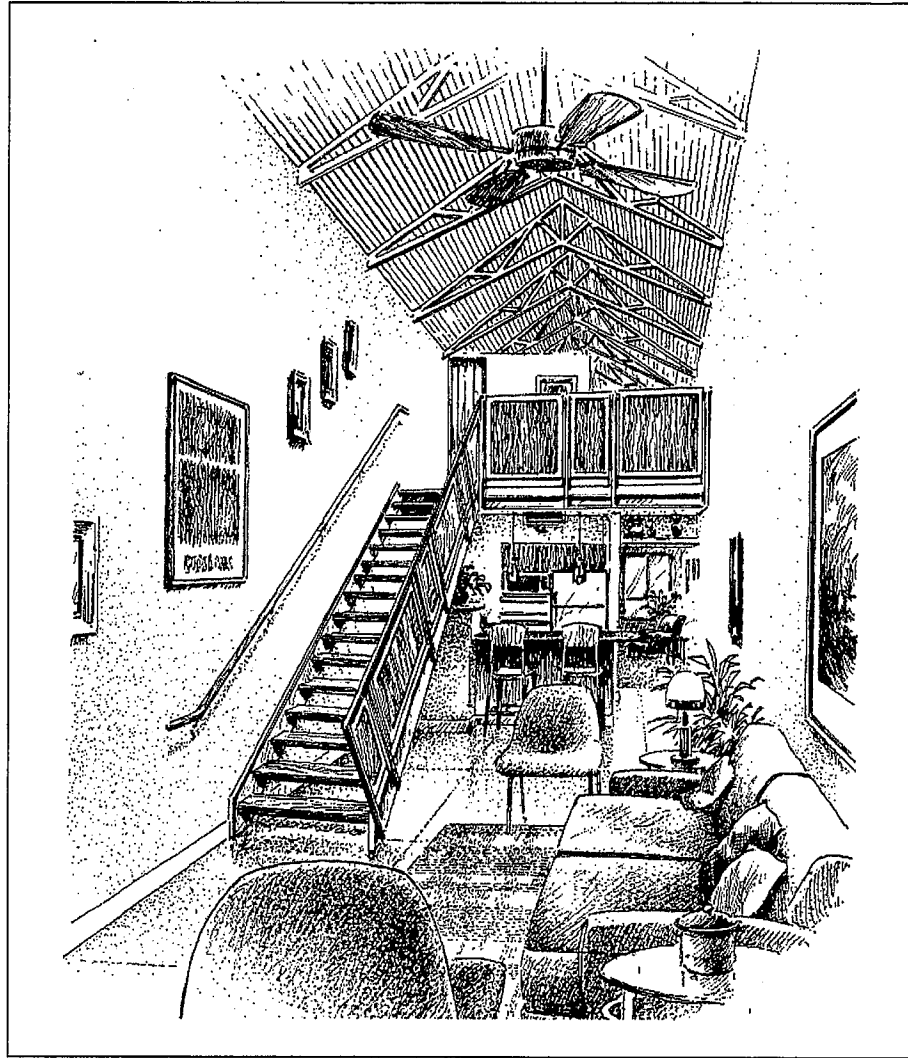




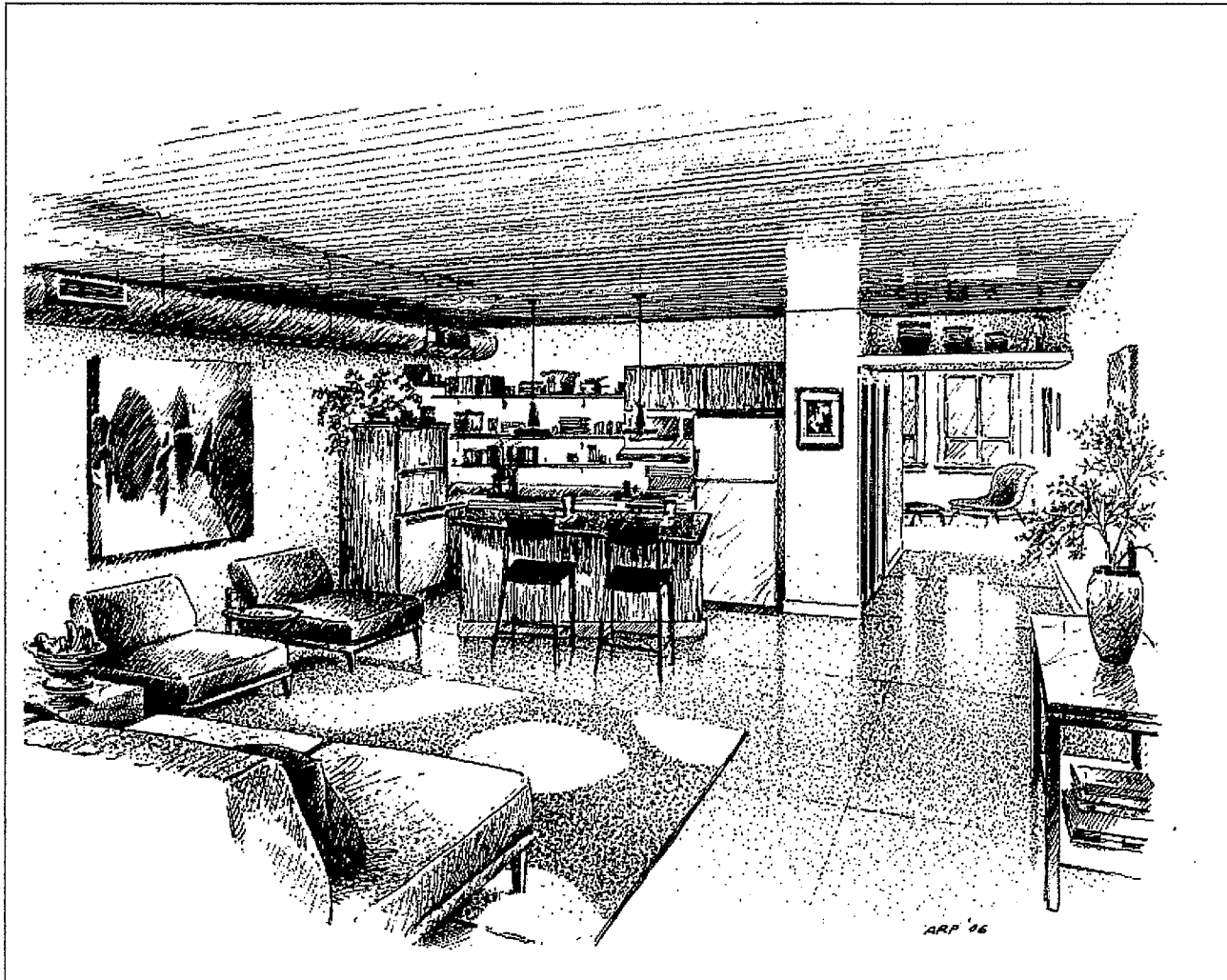
SALES AGENT CONTACT:
JIM MCKEIGHEN
TURF TOWN PROPERTIES, INC.
859.619.9993
859.233.9995
WWW.ARTEKLOFTS.COM



ARTEK

**TWO STORY LOFT
1 AND 2 BATHROOM UNITS AVAILABLE
PRICE RANGE: \$205,500 - \$283,000**

CONTACT: JIM McKEIGHEN, TURF TOWN PROPERTIES, INC. 859.619.9993



ARTEK

ONE STORY FLAT
700 - 775 SQ FT UNITS AVAILABLE
PRICE RANGE: \$169,500 - \$194,600

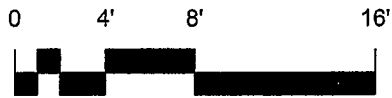
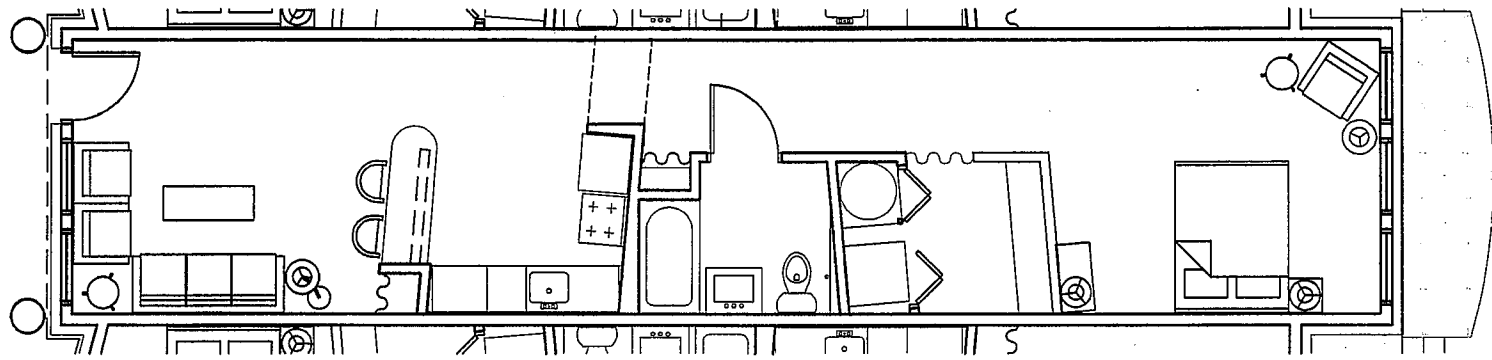
CONTACT: JIM MCKEIGHEN, TURF TOWN PROPERTIES, INC. 859.619.9993

ARTEK SALES MATRIX

| Listing # | Street # | Unit # | Bldg | Unit | Level | Type | Bed | Bath | SqF | Loft | Total SqF | Sales Price | Status |
|-----------|----------|--------|------|------|-------|------|-----|------|-----|------|-----------|-------------|----------|
| 519102 | 163 | 101 | A | 1 | Lower | Flat | 1 | 1 | 724 | | 724 | \$175,244 | |
| 519105 | 163 | 102 | A | 2 | Lower | Flat | 1 | 1 | 779 | | 779 | \$188,557 | |
| 519107 | 163 | 103 | A | 3 | Lower | Flat | 1 | 1 | 773 | | 773 | \$187,105 | |
| 519109 | 163 | 201 | A | 1 | Upper | Loft | 2 | 2 | 791 | 541 | 1332 | \$278,388 | |
| 519110 | 163 | 202 | A | 2 | Upper | Flat | 1 | 1 | 774 | | 774 | \$185,760 | RESERVED |
| 519112 | 163 | 203 | A | 3 | Upper | Loft | 2 | 2 | 781 | 538 | 1319 | \$275,671 | |
| 520490 | 167 | 101 | B | 1 | Lower | Flat | 1 | 1 | 736 | | 736 | \$178,149 | |
| 520491 | 167 | 102 | B | 2 | Lower | Flat | 1 | 1 | 762 | | 762 | \$184,442 | |
| 520492 | 167 | 103 | B | 3 | Lower | Flat | 1 | 1 | 737 | | 737 | \$178,391 | |
| 520493 | 167 | 201 | B | 1 | Upper | Loft | 2 | 2 | 797 | 557 | 1354 | \$282,986 | |
| 520496 | 167 | 202 | B | 2 | Upper | Flat | 1 | 1 | 705 | | 705 | \$169,200 | RESERVED |
| 520498 | 167 | 203 | B | 3 | Upper | Loft | 2 | 2 | 799 | 555 | 1354 | \$282,986 | |
| 519114 | 171 | 105 | C | 1 | Lower | Flat | 1 | 1 | 734 | | 734 | \$180,665 | |
| 519116 | 171 | 104 | C | 2 | Lower | Flat | 1 | 1 | 712 | | 712 | \$171,340 | |
| 519118 | 171 | 103 | C | 3 | Lower | Flat | 1 | 1 | 740 | | 740 | \$179,117 | |
| 519120 | 171 | 102 | C | 4 | Lower | Flat | 1 | 1 | 727 | | 727 | \$175,970 | |
| 519123 | 171 | 101 | C | 5 | Lower | Flat | 1 | 1 | 726 | | 726 | \$175,728 | |
| 519124 | 171 | 205 | C | 1 | Upper | Loft | 2 | 2 | 774 | 497 | 1271 | \$265,639 | |
| 519164 | 171 | 204 | C | 2 | Upper | Flat | 1 | 1 | 755 | | 755 | \$189,636 | |
| 519128 | 171 | 203 | C | 3 | Upper | Loft | 2 | 1 | 739 | 296 | 1035 | \$205,499 | |
| 519125 | 171 | 202 | C | 4 | Upper | Flat | 1 | 1 | 768 | | 768 | \$189,850 | |
| 519130 | 171 | 201 | C | 5 | Upper | Loft | 2 | 2 | 776 | 517 | 1293 | \$273,237 | |
| 520525 | 155 | 108 | D | 1 | Lower | Flat | 1 | 1 | 735 | | 735 | \$180,907 | |
| 520526 | 155 | 107 | D | 2 | Lower | Flat | 1 | 1 | 725 | | 725 | \$175,486 | |
| 520528 | 155 | 106 | D | 3 | Lower | Flat | 1 | 1 | 707 | | 707 | \$169,468 | |
| 520531 | 155 | 105 | D | 4 | Lower | Flat | 1 | 1 | 738 | | 738 | \$178,633 | |
| 520533 | 155 | 104 | D | 5 | Lower | Flat | 1 | 1 | 716 | | 716 | \$171,625 | |
| 520536 | 155 | 103 | D | 6 | Lower | Flat | 1 | 1 | 766 | | 766 | \$185,410 | |
| 520539 | 155 | 102 | D | 7 | Lower | Flat | 1 | 1 | 735 | | 735 | \$177,907 | |
| 520543 | 155 | 101 | D | 8 | Lower | Flat | 1 | 1 | 744 | | 744 | \$183,085 | |
| 520548 | 155 | 208 | D | 1 | Upper | Flat | 1 | 1 | 775 | | 775 | \$194,580 | |
| 520550 | 155 | 207 | D | 2 | Upper | Loft | 2 | 2 | 750 | 488 | 1238 | \$247,600 | RESERVED |
| 520552 | 155 | 206 | D | 3 | Upper | Flat | 1 | 1 | 721 | | 721 | \$178,231 | |
| 520556 | 155 | 205 | D | 4 | Upper | Loft | 2 | 1 | 738 | 292 | 1030 | \$195,700 | RESERVED |
| 520558 | 155 | 204 | D | 5 | Upper | Flat | 1 | 1 | 716 | | 716 | \$176,995 | |
| 520571 | 155 | 203 | D | 6 | Upper | Loft | 2 | 1 | 766 | 301 | 1067 | \$202,730 | RESERVED |
| 520572 | 155 | 202 | D | 7 | Upper | Flat | 1 | 1 | 722 | | 722 | \$178,478 | |
| 520575 | 155 | 201 | D | 8 | Upper | Loft | 2 | 2 | 781 | 534 | 1315 | \$263,000 | RESERVED |

*Prices subject to change without notice

*Total square footage does not include balconies, concourse or terraces

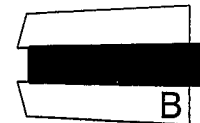


SCALE: 1/8" = 1'-0"



July 23, 2006

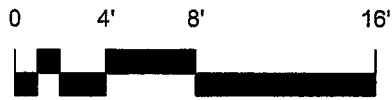
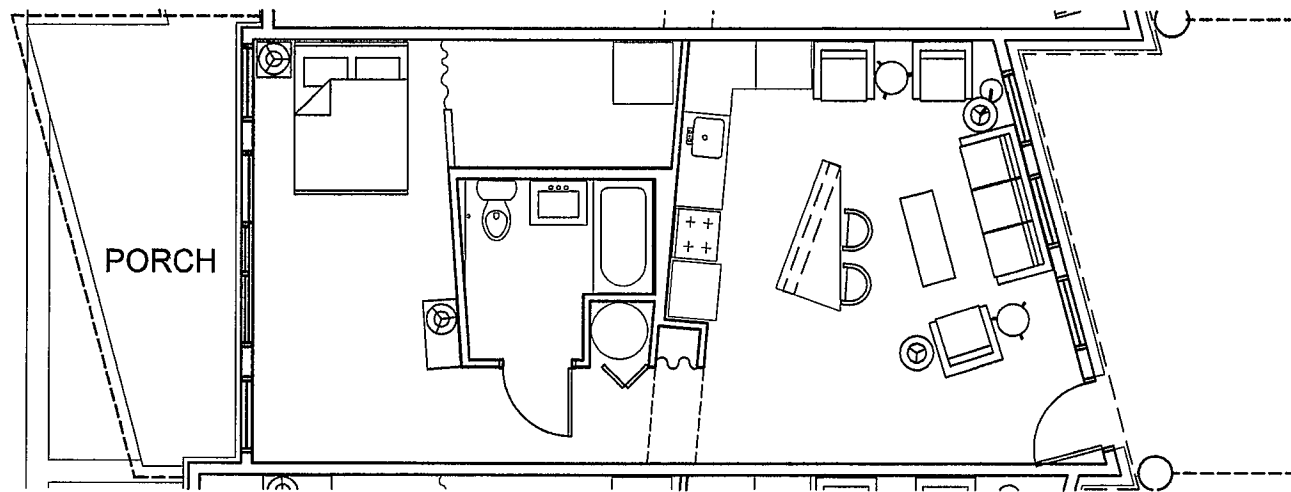
K. Norman Berry Associates Architects PLLC



Lower Level

B-2

AU Associates



SCALE: 1/8" = 1'-0"



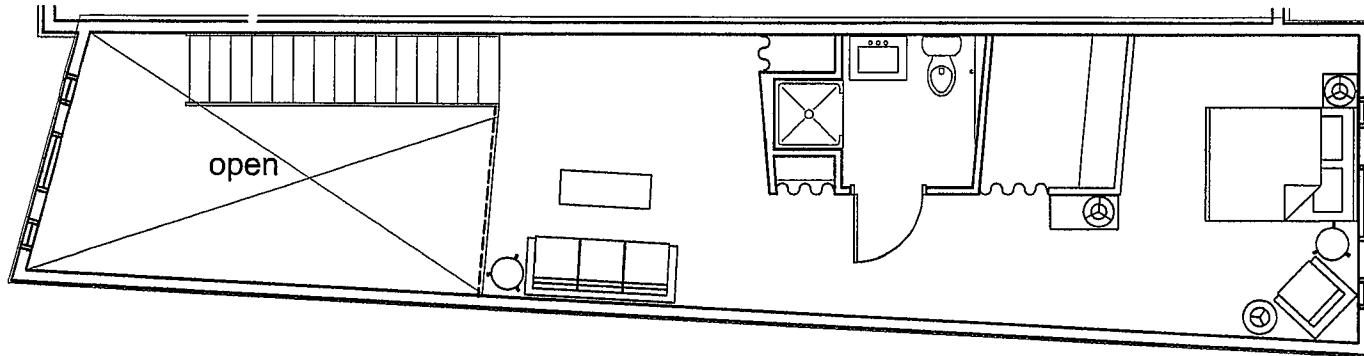
July 23, 2006

K. Norman Berry Associates Architects PLLC

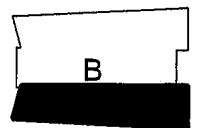
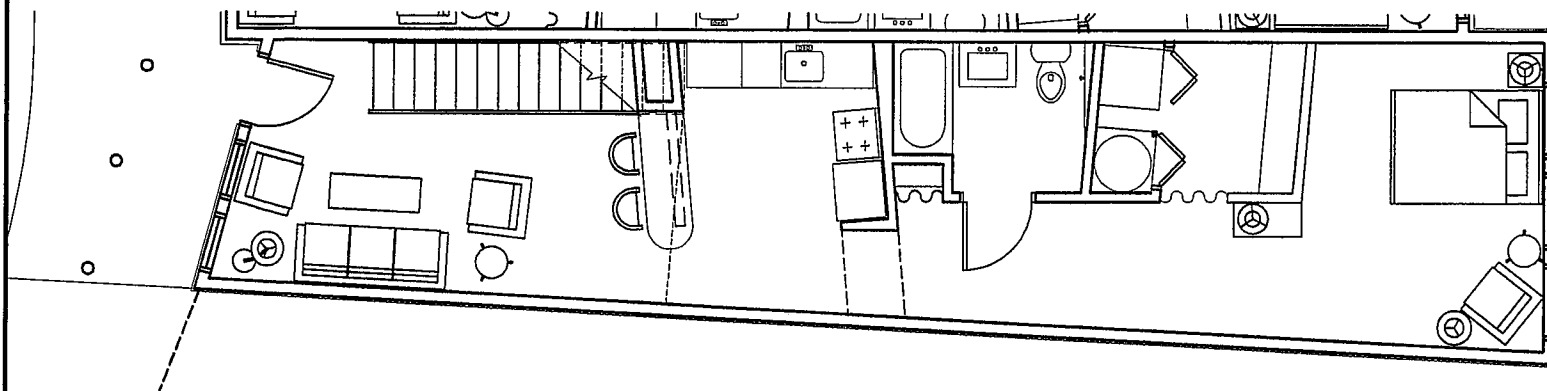


Lower Level
D-3

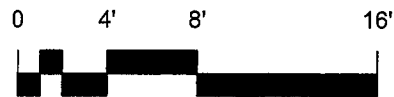
AU Associates



Loft Level
B-1



Upper Level
B-1



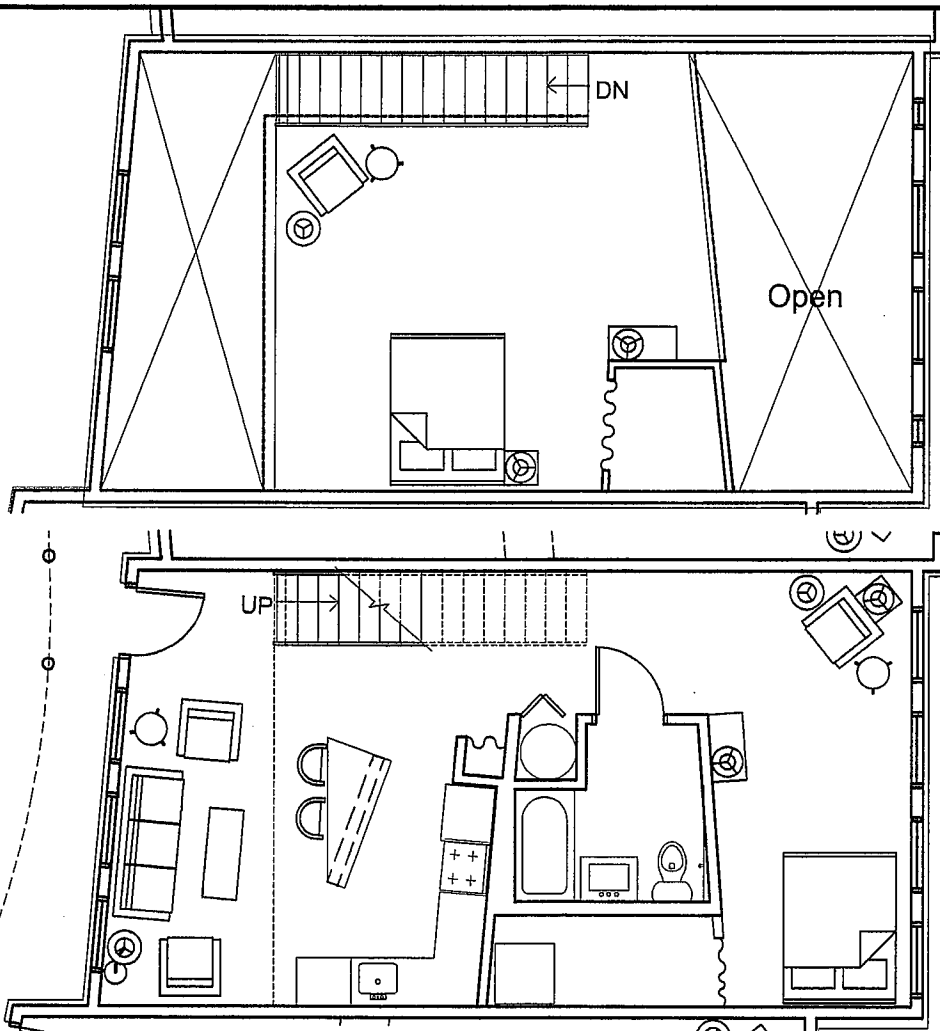
SCALE: 1/8" = 1'-0"



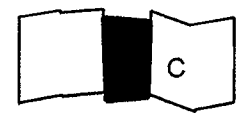
July 23, 2006

K. Norman Berry Associates Architects PLLC

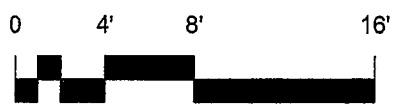
AU Associates



Loft Level
C-3



Upper Level
C-3



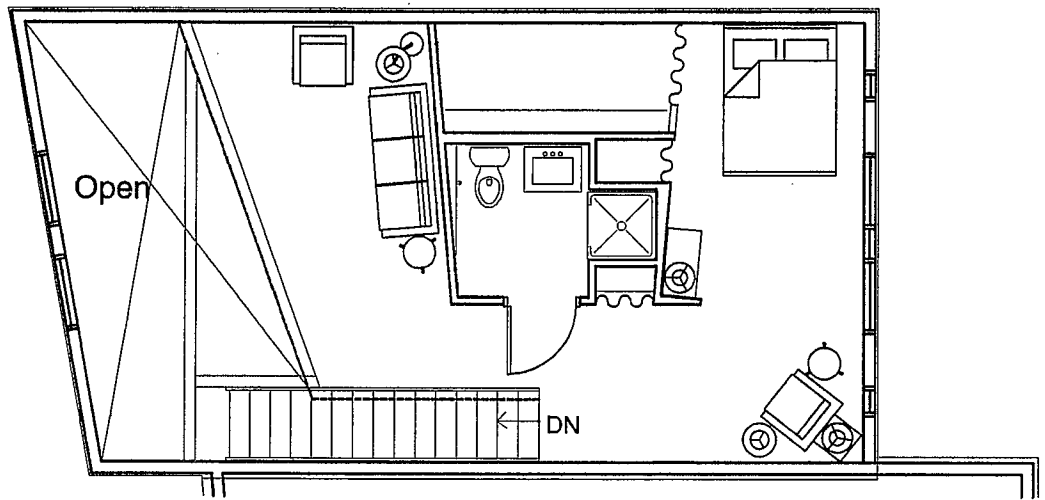
SCALE: 1/8" = 1'-0"



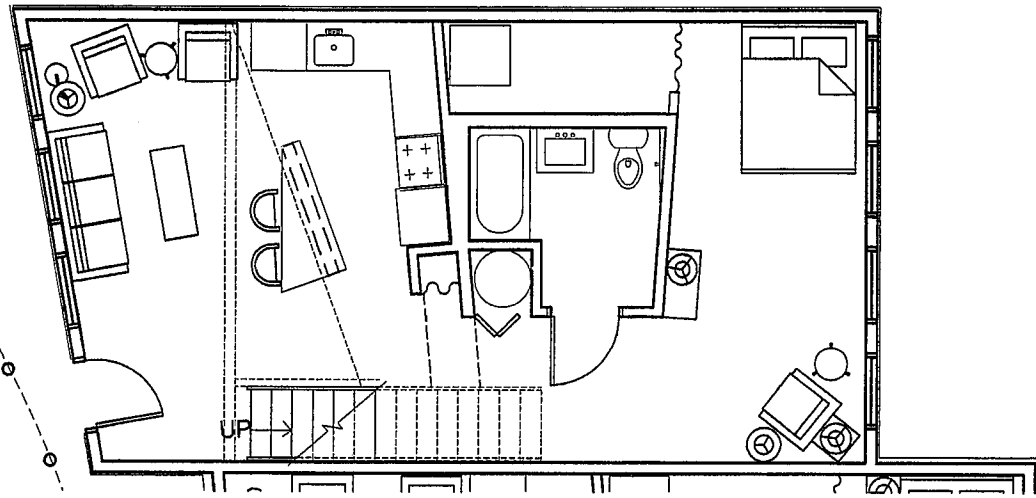
July 23, 2006

K. Norman Berry Associates Architects PLLC

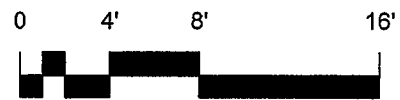
AU Associates



Loft Level
C-5



Upper Level
C-5



SCALE: 1/8" = 1'-0"



July 23, 2006

K. Norman Berry Associates Architects PLLC

AU Associates